

## 1.1 Chinook

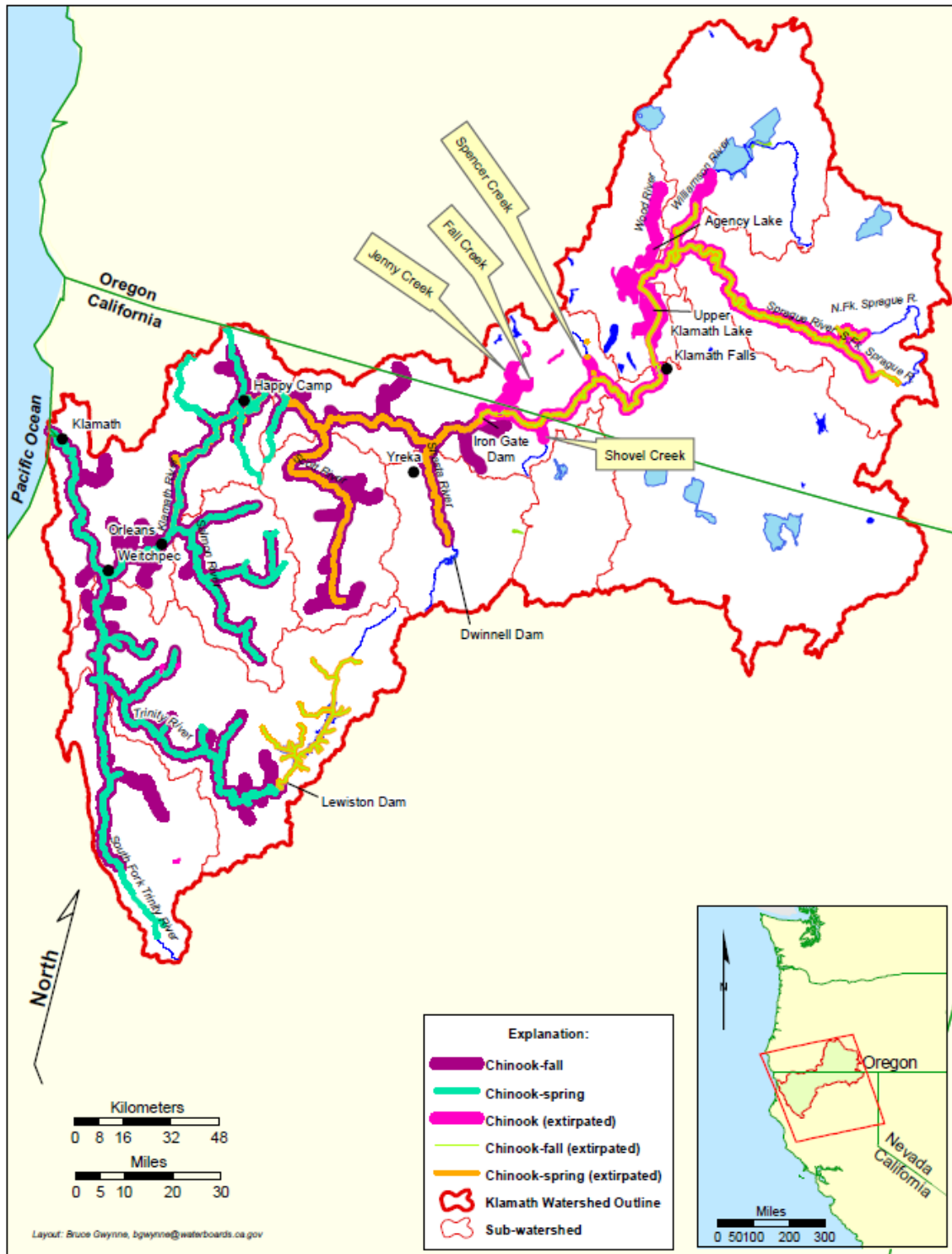


Figure 4-1: Current distribution (purple streams) and areas from which Chinook salmon have been extirpated (pink streams) in the Klamath River Basin. The data for "Chinook extirpated" did not differentiate between fall and spring-run Chinook. Map from NCRWQCB 2010a-c. Data sources for map: Hamilton et al. 2005; Moffett and Smith 1950; Moyle 2002; USFS 1996, USFS 2006; as cited in NCRWQCB 2010a-c.

## 1.2 Coho

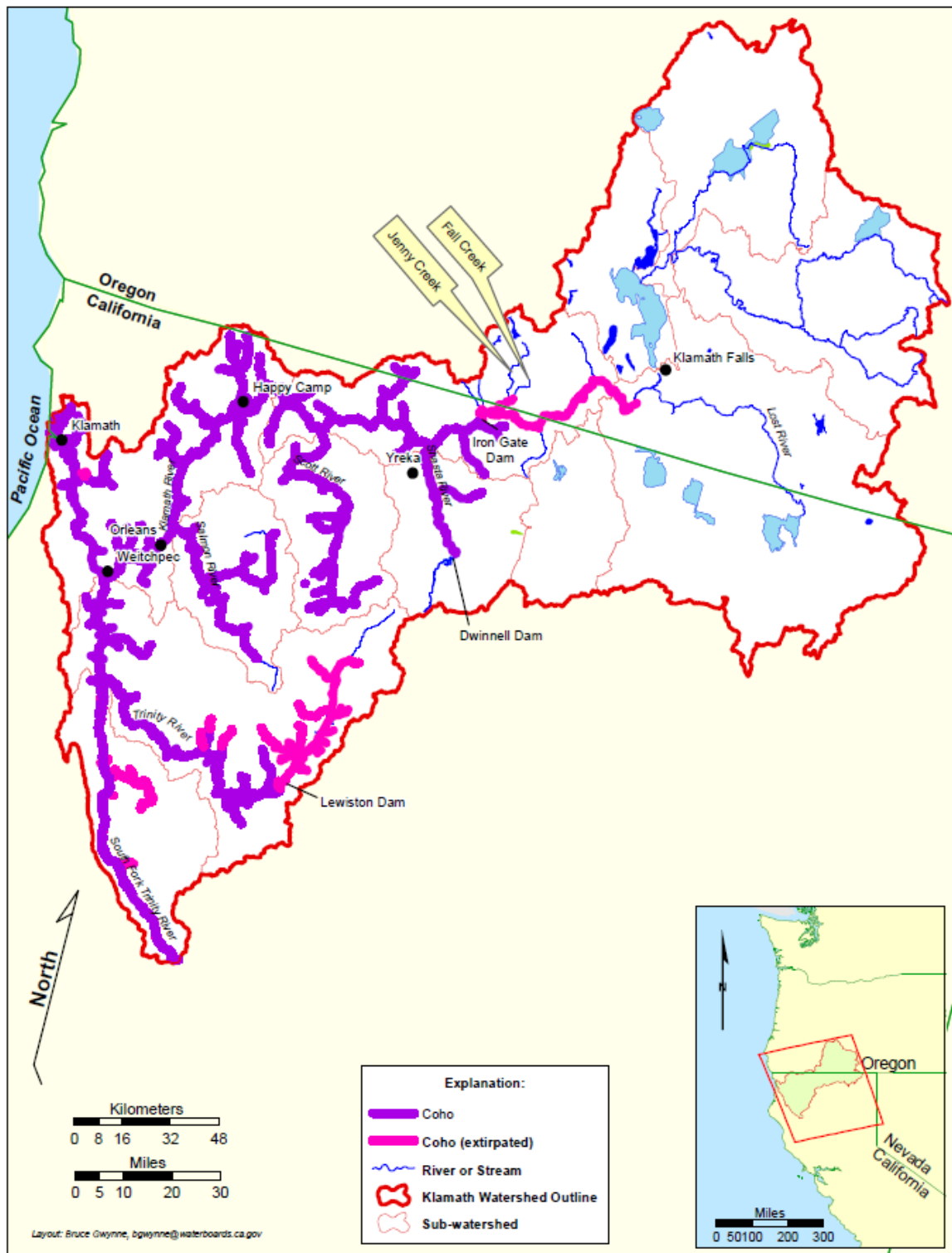


Figure 4-2: Current distribution (purple streams) and areas from which coho salmon have been extirpated (pink streams) in the Klamath River Basin. Map from NCRWQCB 2010a-c. Data sources for map: Brown and Moyle 1991; Brown et al. 1994; CDFW 2002; Cyr 2006; Hamilton et al. 2005; USFS 1996; as cited in NCRWQCB 2010a-c.

### 1.3 Steelhead

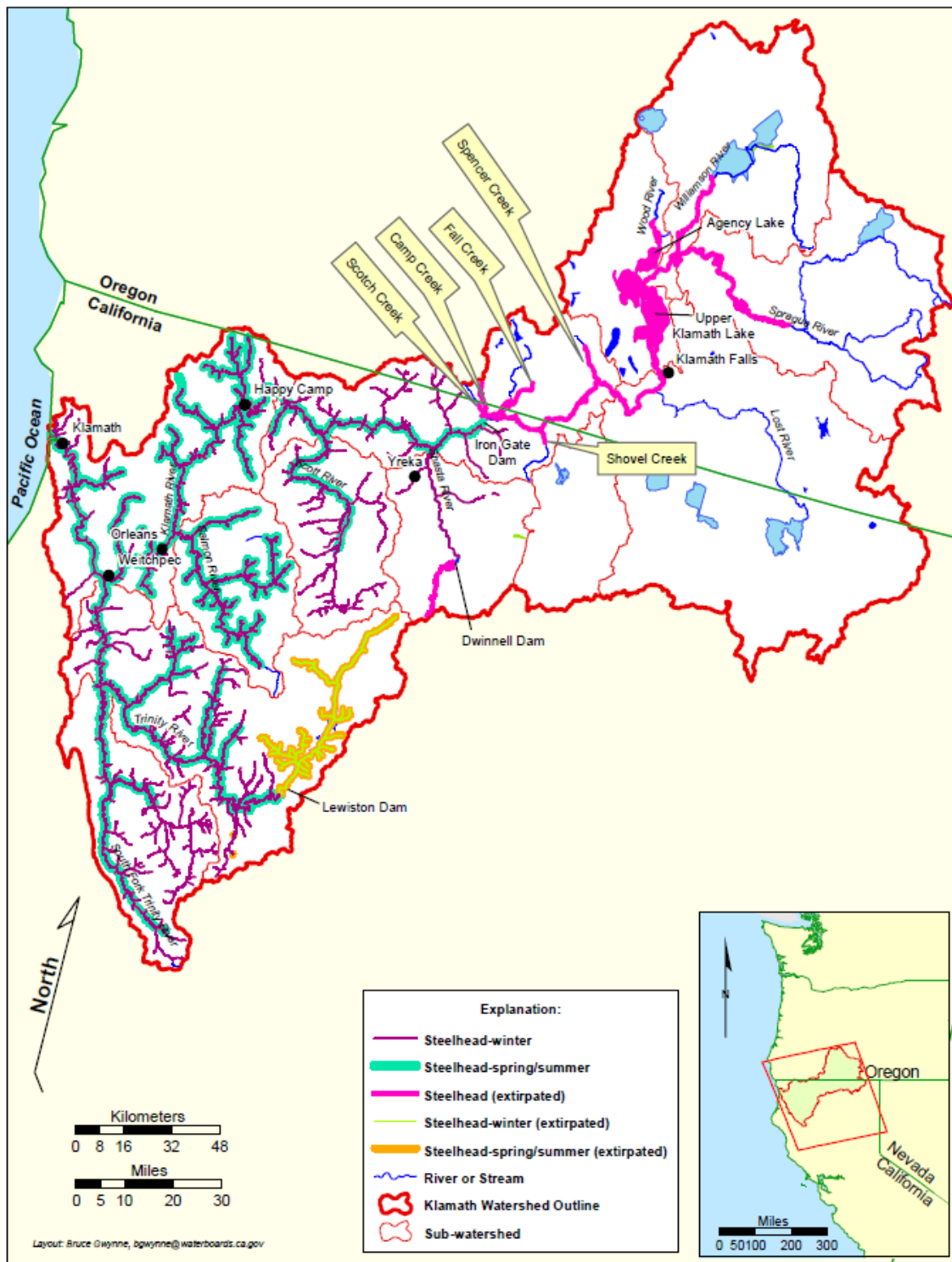
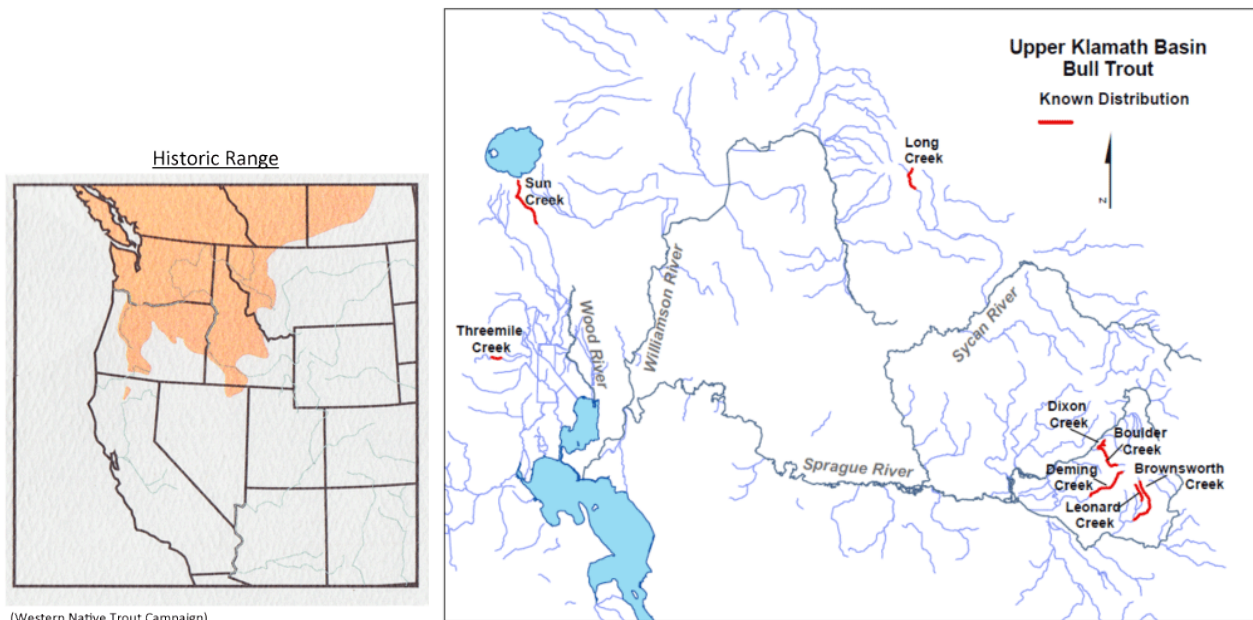


Figure 4-3: Current distribution and areas where steelhead have been extirpated in the Klamath Basin. Note that the data for “Steelhead extirpated” does not differentiate between seasonal steelhead runs. Map from NCRWQCB 2010a-c. Data sources for map: USFS 1996, Hamilton et al. 2005, Rushton 2005, Hardy and Addley 2006, as cited in NCRWQCB 2010a-c.

## 1.4 Bull Trout

(Note – these maps not in Synthesis Report, found via current online search).

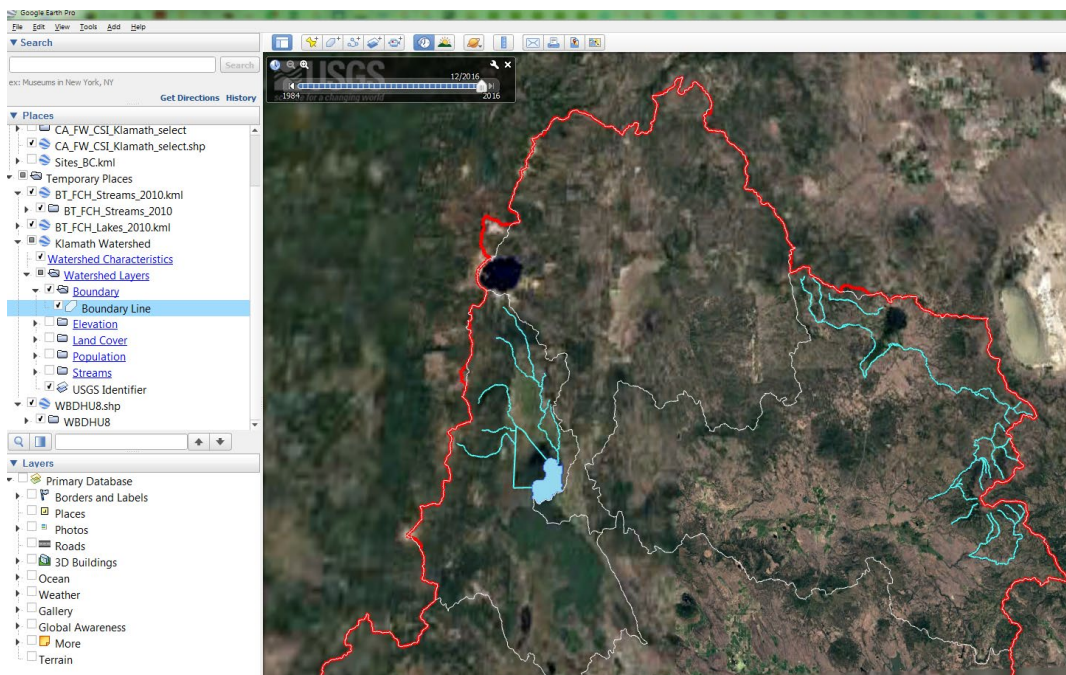
Via National Parks Service: <https://www.nps.gov/crla/learn/nature/bulltroutdistribution.htm>



- Bull Trout once widely distributed in Upper Klamath Basin at least as far downstream as Keno.
- At least 40% of historical Bull Trout populations in the basin have experienced recent extirpation (Buchanan et al. 1997).
- Bull Trout now limited to discrete isolated headwater populations.
- Listed as threatened under ESA in Klamath in 1998, prior to range-wide listing in 1999
- Basin-wide recovery goals include expanding populations downstream.
- In 1989 Bull Trout in Sun Creek were restricted in distribution to 1.9 km and numbered approximately 150 individuals.
- Threats included nonnative Brook Trout (*S. fontinalis*) and lack of habitat connectivity due to irrigation of private land.

### **Bull Trout CRITICAL HABITAT (via ODFW Dataset plotted in Google Earth)**

**Also Downloadable from:** <https://databasin.org/datasets/9dbe7d1e7d1c45c99dbd042278155b63>





## 1.5 Redband Trout

### Klamath, Upper Sacramento, and North Lahontan GMU Current Redband Conservation Populations & Historic Distribution

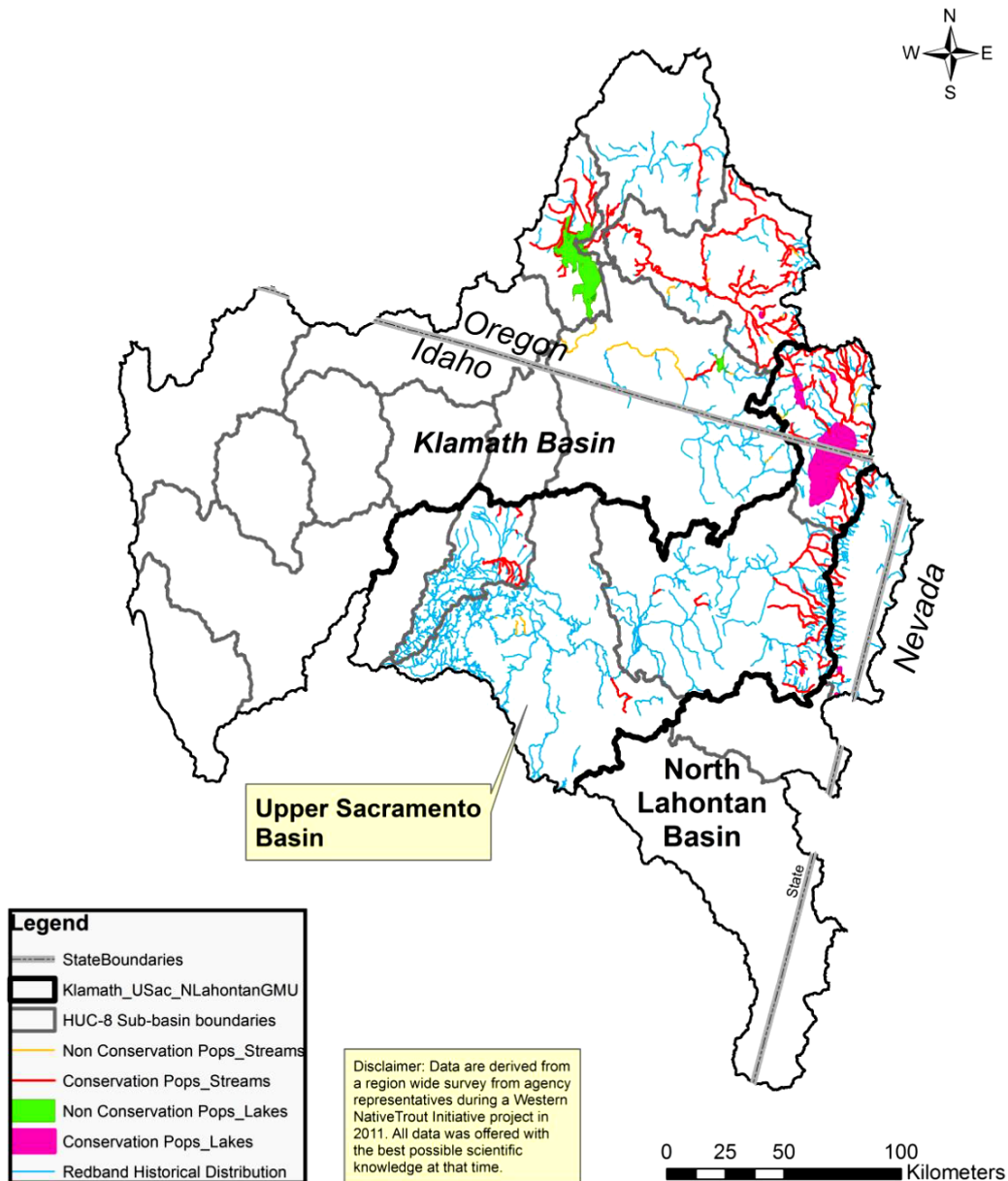


Figure 4-4: Distribution of interior redband trout in the Klamath, Upper Sacramento, and North Lahontan Geographic Management Unit (GMU). Figure from IRCT 2016. Map shows the current redband trout distribution (dark red and yellow lines) overlaid on estimated historical redband trout distribution (light blue lines).

See

[https://www.researchgate.net/publication/273403778\\_Status\\_and\\_Conservation\\_of\\_Interior\\_Redband\\_Trout\\_in\\_the\\_Western\\_United\\_States](https://www.researchgate.net/publication/273403778_Status_and_Conservation_of_Interior_Redband_Trout_in_the_Western_United_States)

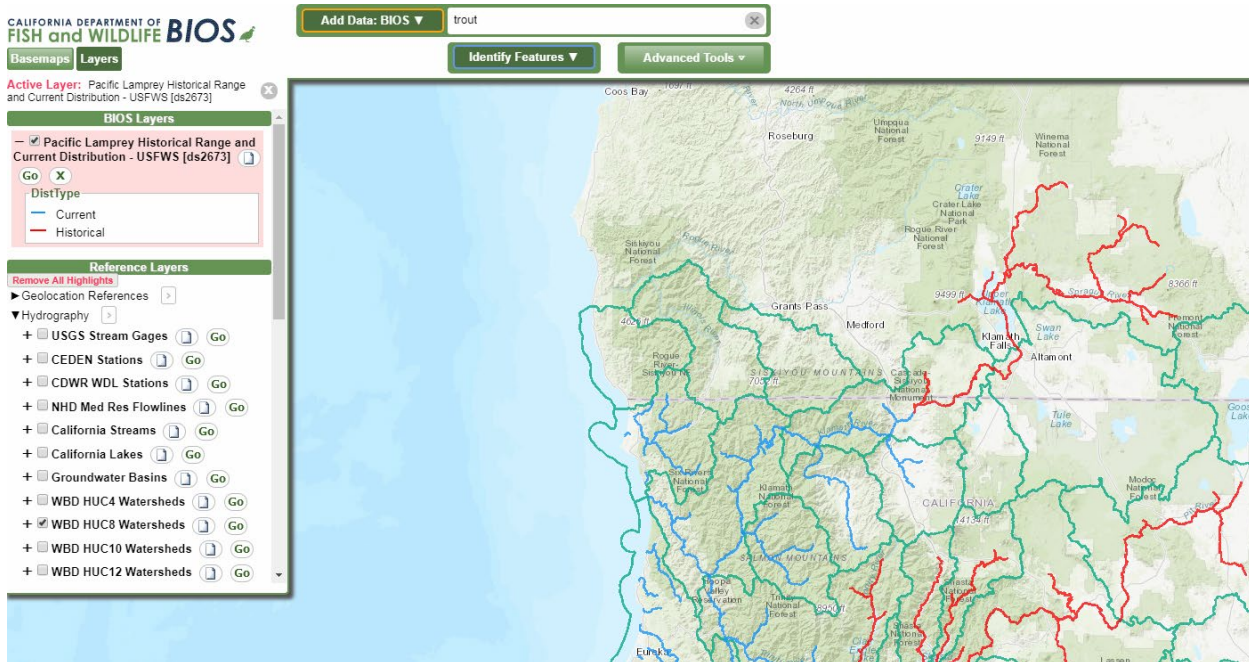
also:

## 1.6 Pacific Lamprey

(Note – these maps not in Synthesis Report, found via current online search).

Via CDFW BIOS Data Explorer: <https://map.dfg.ca.gov/bios/?al=ds2673>

Corresponding ODFW data viewer (seems broken): [https://nrmp.dfw.state.or.us/FHD\\_FPB\\_Viewer/index.html](https://nrmp.dfw.state.or.us/FHD_FPB_Viewer/index.html)



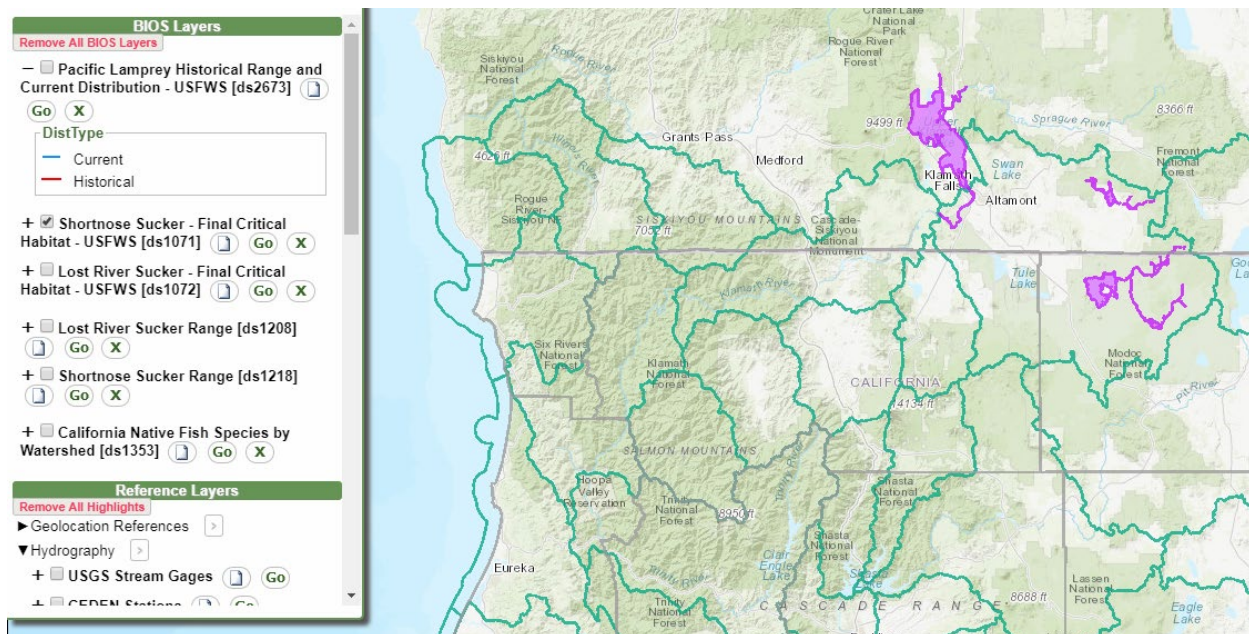
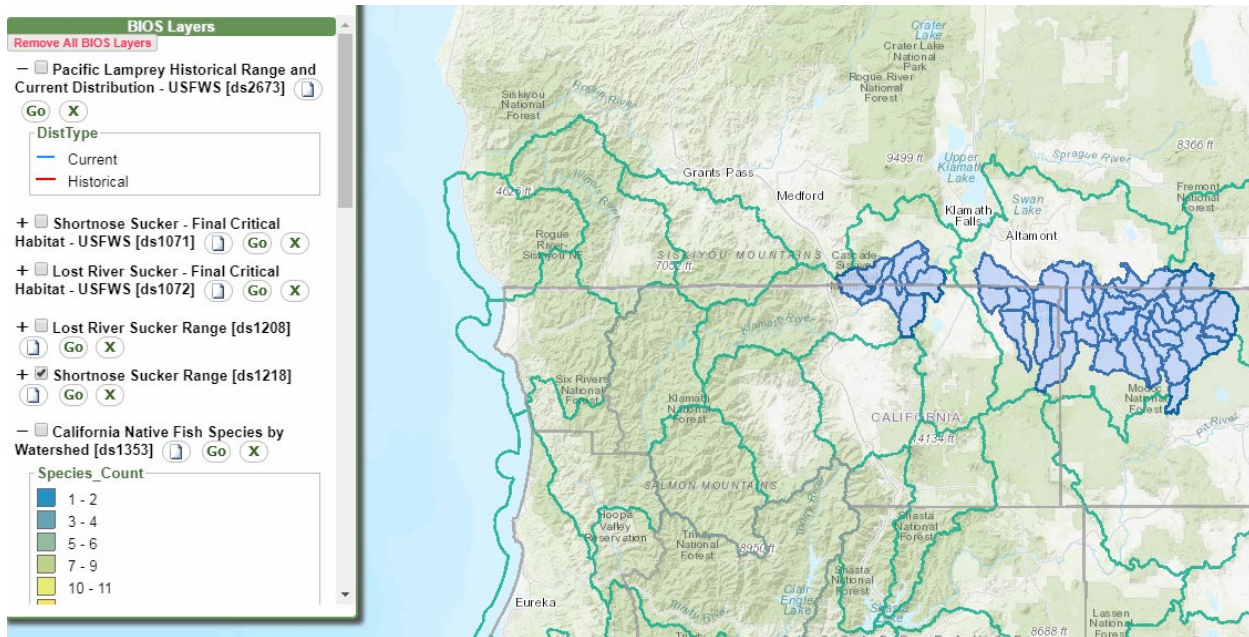
## 1.7 Suckers

(Note – these maps not in Synthesis Report, found via current online search).

Via CDFW BIOS Data Explorer: <https://map.dfg.ca.gov/bios/?al=ds2673>

Corresponding ODFW data viewer (seems broken): [https://nrmp.dfw.state.or.us/FHD\\_FPB\\_Viewer/index.html](https://nrmp.dfw.state.or.us/FHD_FPB_Viewer/index.html)

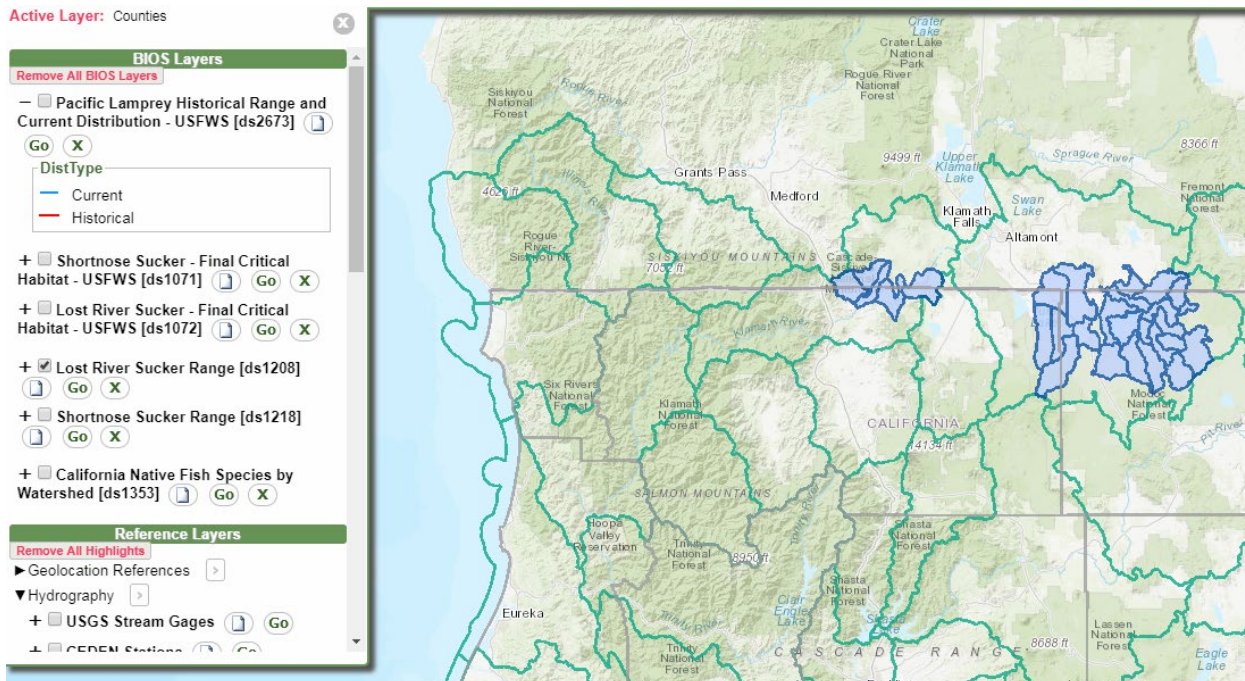
### Shortnose Sucker RANGE (TOP) and CRITICAL HABITAT (BOTTOM)



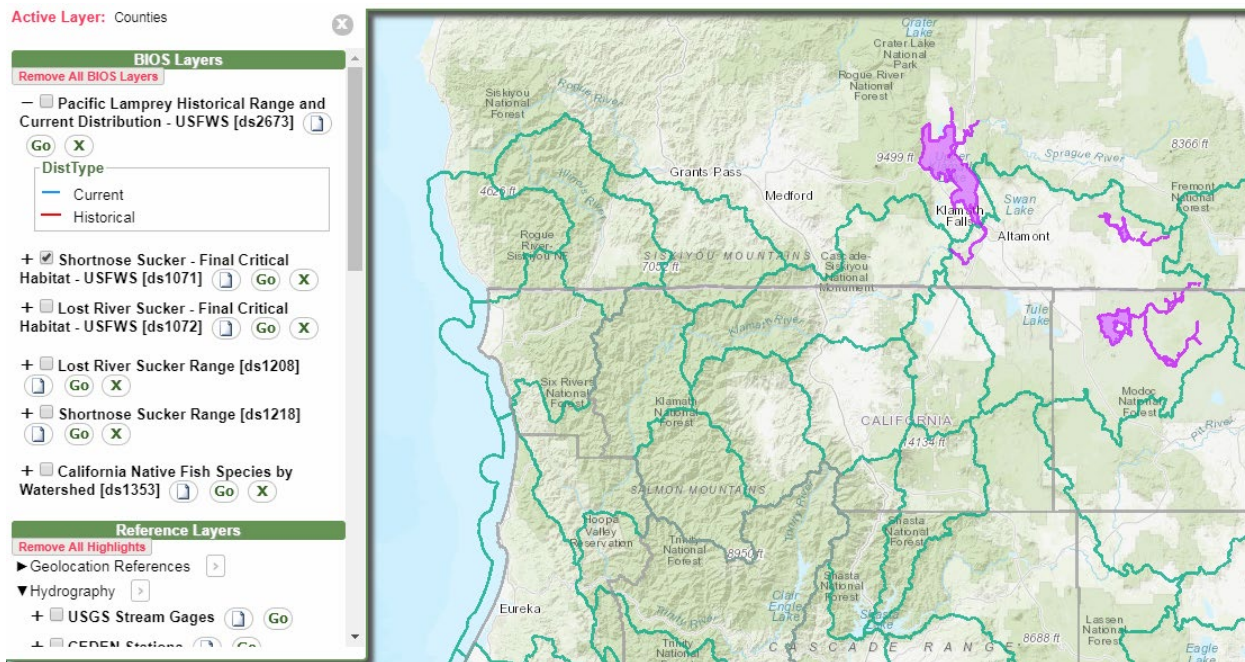


# Lost River Sucker RANGE (TOP) and CRITICAL HABITAT (BOTTOM)

Active Layer: Counties



Active Layer: Counties





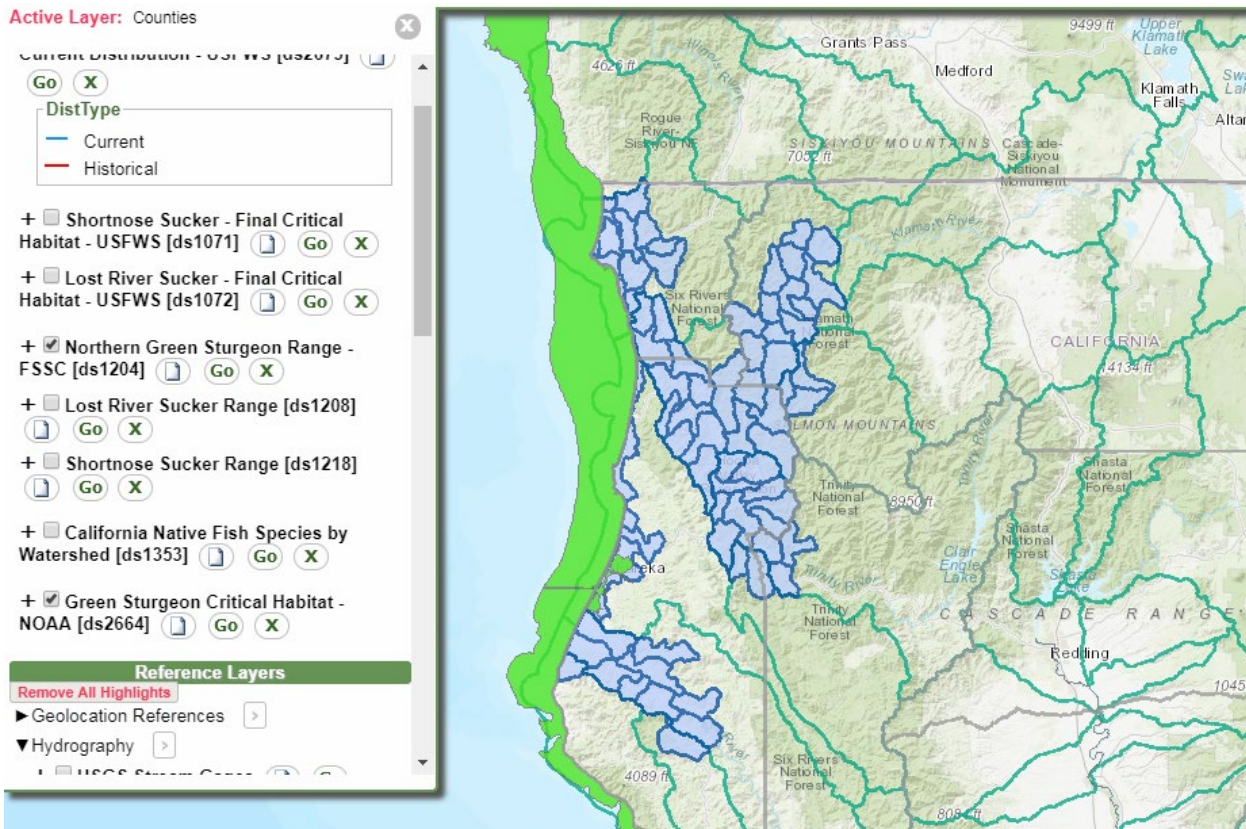
## 1.8 Green Sturgeon

(Note – these maps not in Synthesis Report, found via current online search).

Via CDFW BIOS Data Explorer: <https://map.dfg.ca.gov/bios/?al=ds2673>

Corresponding ODFW data viewer (seems broken): [https://nrmp.dfw.state.or.us/FHD\\_FPB\\_Viewier/index.html](https://nrmp.dfw.state.or.us/FHD_FPB_Viewier/index.html)

### **Green Sturgeon RANGE (for Northern Distinct Pop - Blue) and CRITICAL HABITAT (Green)**



## 1.9 Eulachon

(Note – these maps not in Synthesis Report, found via current online search).

Via CDFW BIOS Data Explorer: <https://map.dfg.ca.gov/bios/?al=ds2673>

Corresponding ODFW data viewer (seems broken): [https://nrmp.dfw.state.or.us/FHD\\_FPB\\_Viewer/index.html](https://nrmp.dfw.state.or.us/FHD_FPB_Viewer/index.html)

### **Eulachon RANGE (for Northern Distinct Pop - Blue) and CRITICAL HABITAT (Orange)**

