

Fish Distribution at the HUC12 scale in the Upper Klamath Lake sub-basin

Prepared by Oregon Department of Fish and Wildlife

Mark E. Hereford

William R. Tinniswood

Benji S. Ramirez

Resident Fishes:

Bull Trout – Current and historical distribution

Redband Trout – Distribution

Lost River and Shortnose Sucker – Distribution

Anadromous Fishes:

Steelhead Trout – Potential distribution

Chinook Salmon – Potential distribution

Pacific Lamprey – Potential distribution

References:

Buchanan, D.V., M.L. Hanson, and R.M. Hooton. 1997. Status of Oregon's Bull Trout. Oregon Department of Fish and Wildlife, Portland.

Fortune, J.D., A.R. Gerlach, and C.J. Hanel. 1966. A study to determine the feasibility of establishing salmon and steelhead in the Upper Klamath Basin. Oregon State Game Commission and Pacific Power and Light Company. Portland, OR.

Huntington, C.W., E.W. Claire, F.A. Espinosa, R. House. 2006. Reintroduction of anadromous fish to the Upper Klamath Basin: an evaluation and conceptual plan. Prepared for the Klamath and Yurok Tribes, March, 2006.



Oregon Department of Fish and Wildlife and The Klamath Tribes. 2020 – DRAFT Implementation plan for the reintroduction of anadromous fishes into the Oregon portion of the Upper Klamath Basin. Prepared By Hereford, M.E., Wise, T.G., and Huntington, C.W.

Tinniswood, W.R. and Ramirez, B.S. 2020. DRAFT – Klamath watershed district stock status review of native fish. Oregon Department of Fish and Wildlife. Salem.

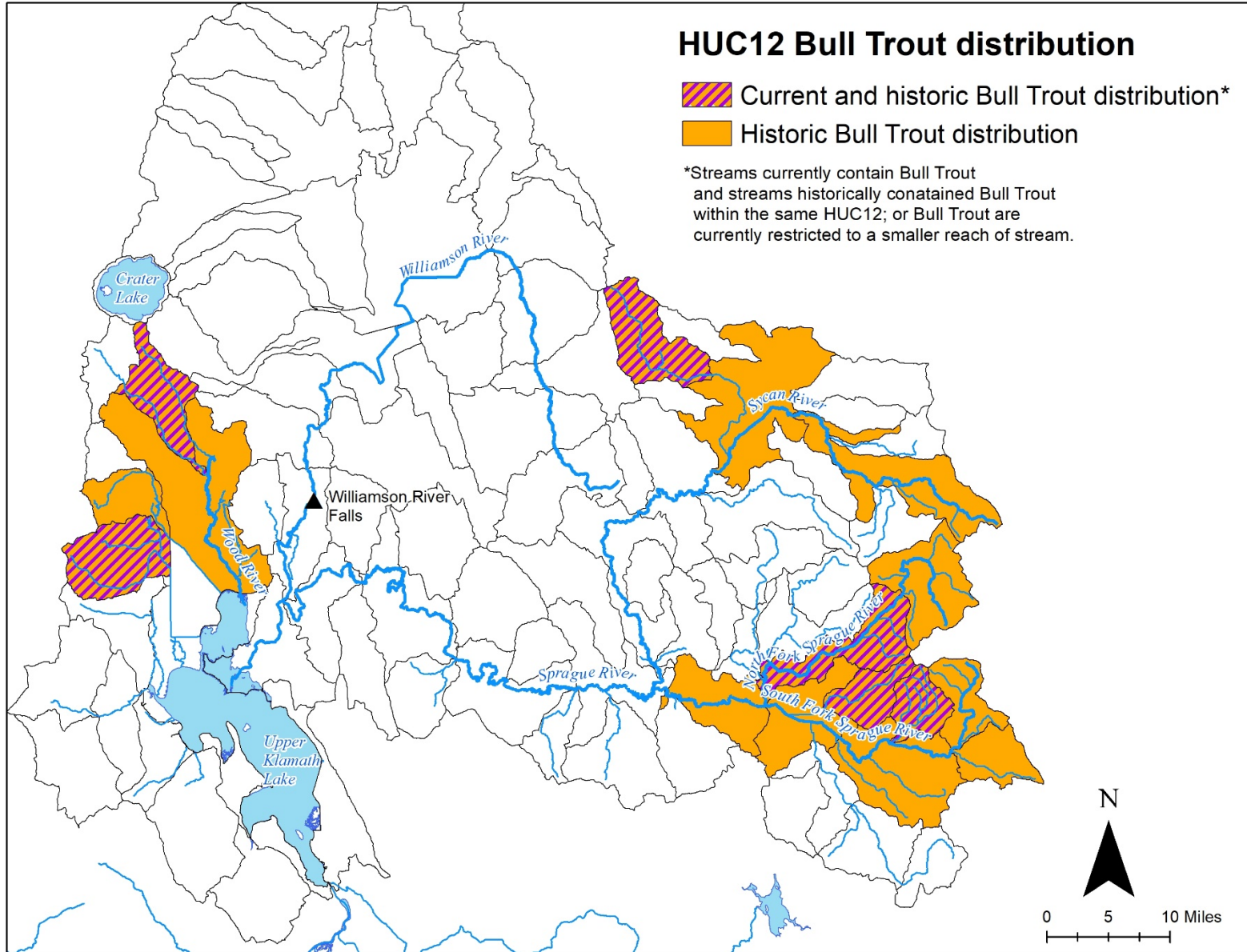


2020

HUC12 Bull Trout distribution

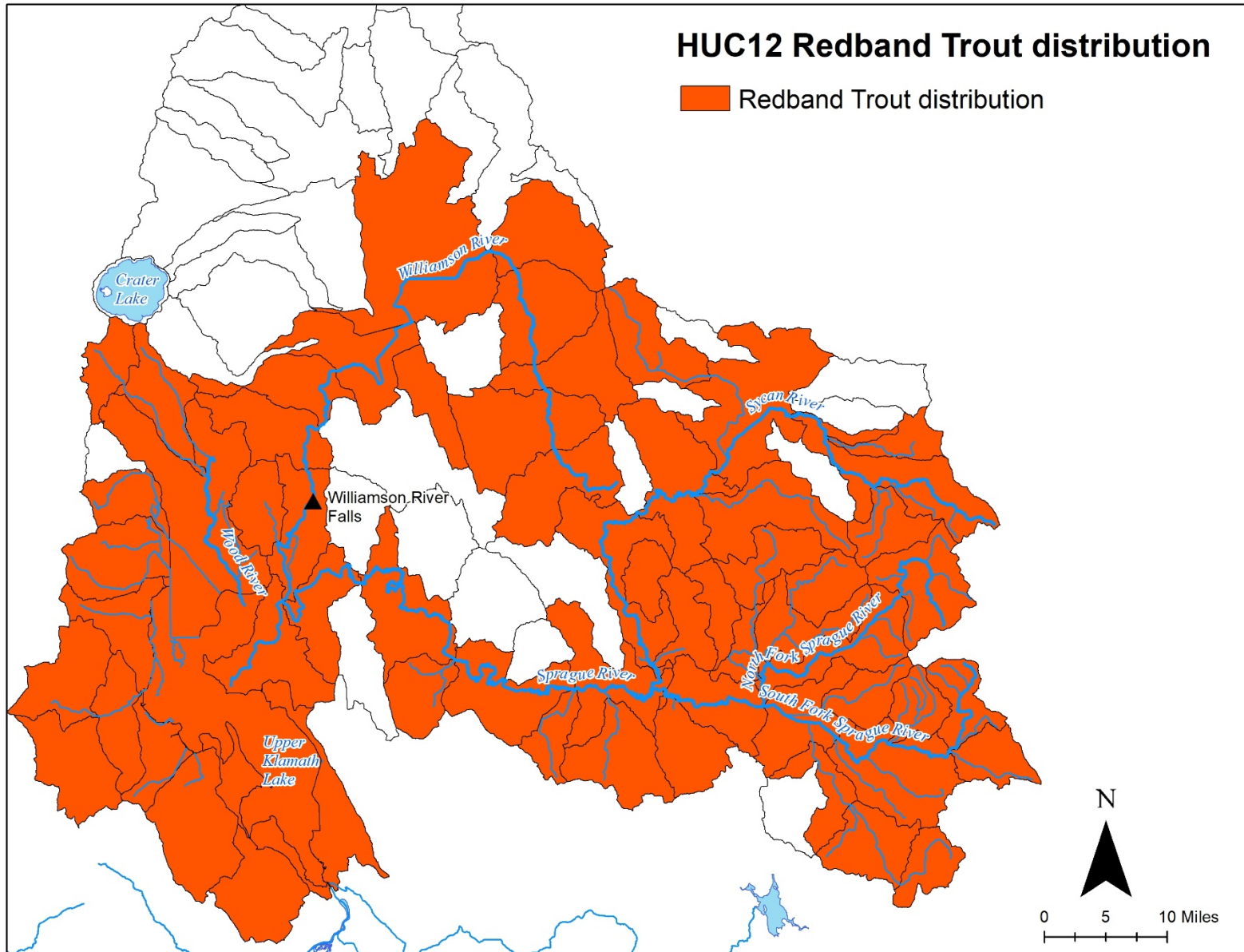
-  Current and historic Bull Trout distribution*
-  Historic Bull Trout distribution

*Streams currently contain Bull Trout and streams historically contained Bull Trout within the same HUC12; or Bull Trout are currently restricted to a smaller reach of stream.



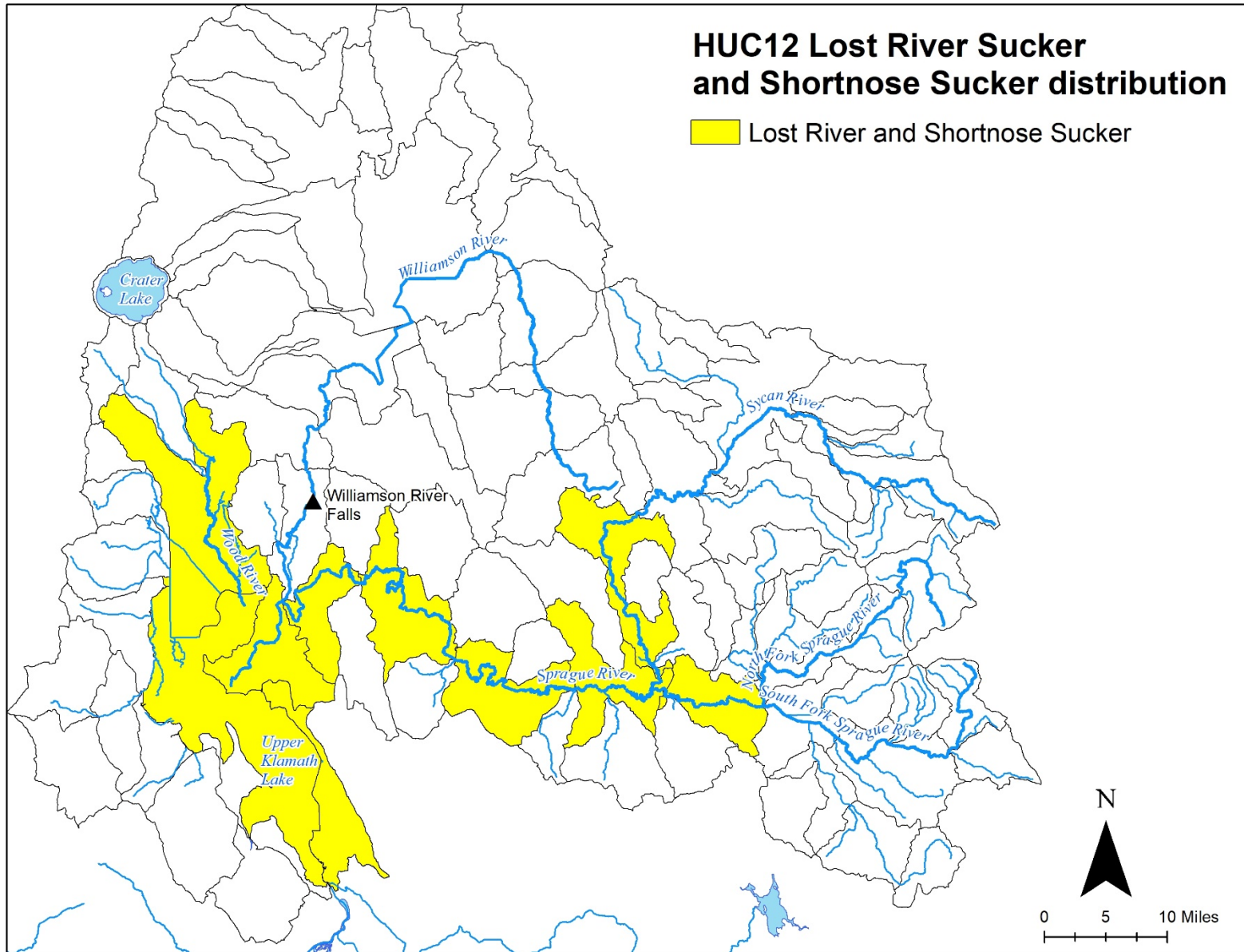
HUC12 Redband Trout distribution

 Redband Trout distribution



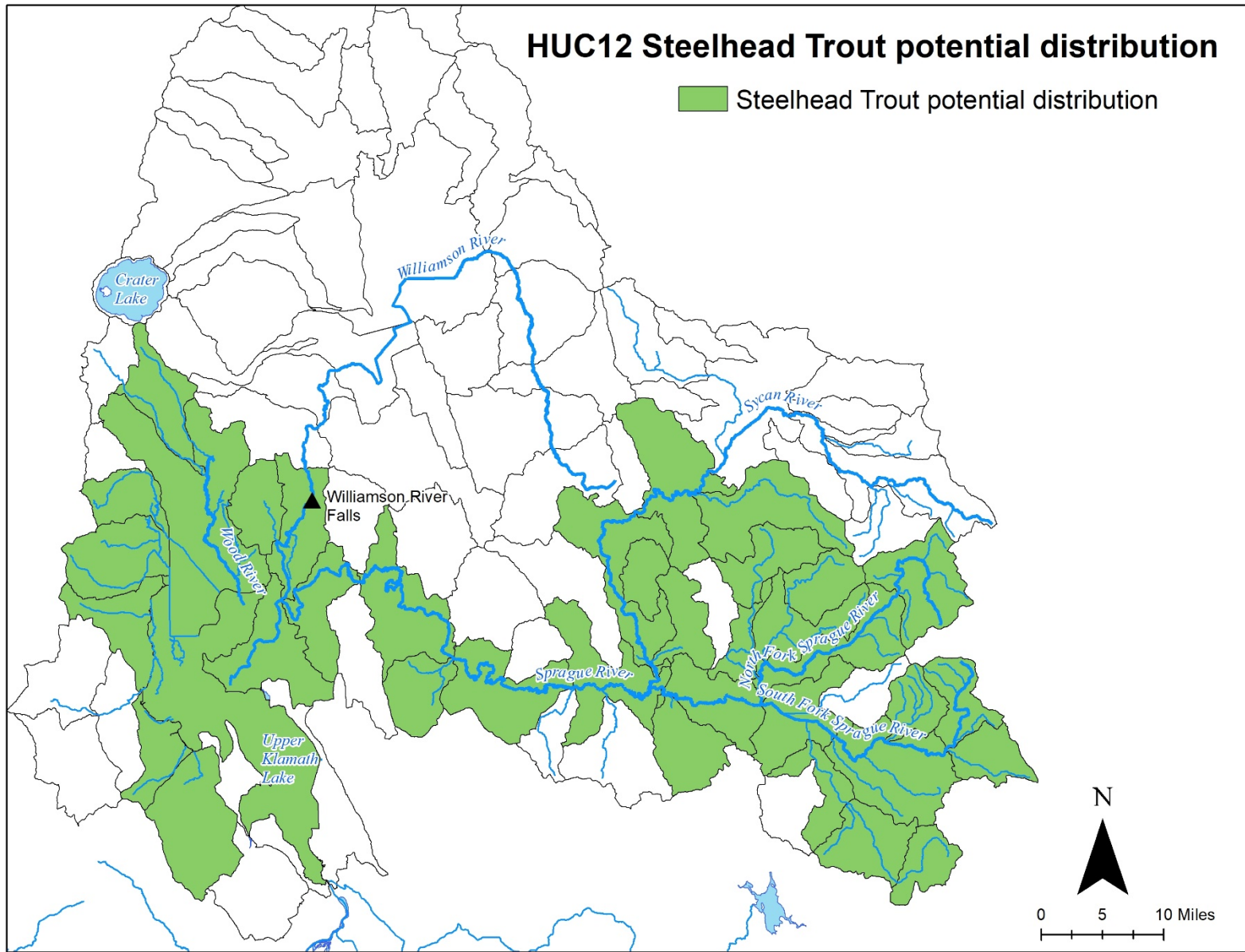
HUC12 Lost River Sucker and Shortnose Sucker distribution

■ Lost River and Shortnose Sucker



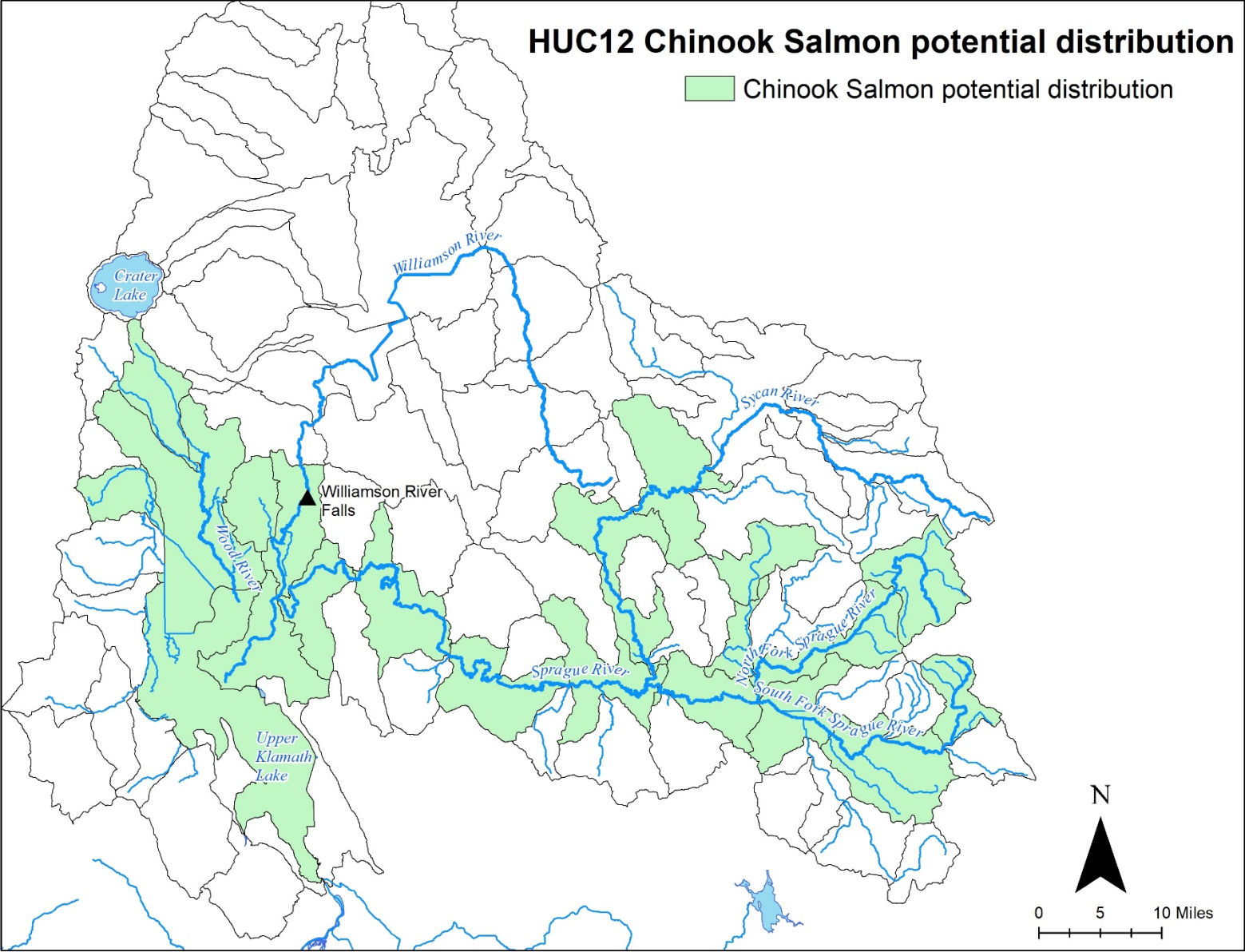
HUC12 Steelhead Trout potential distribution

Steelhead Trout potential distribution




HUC12 Chinook Salmon potential distribution

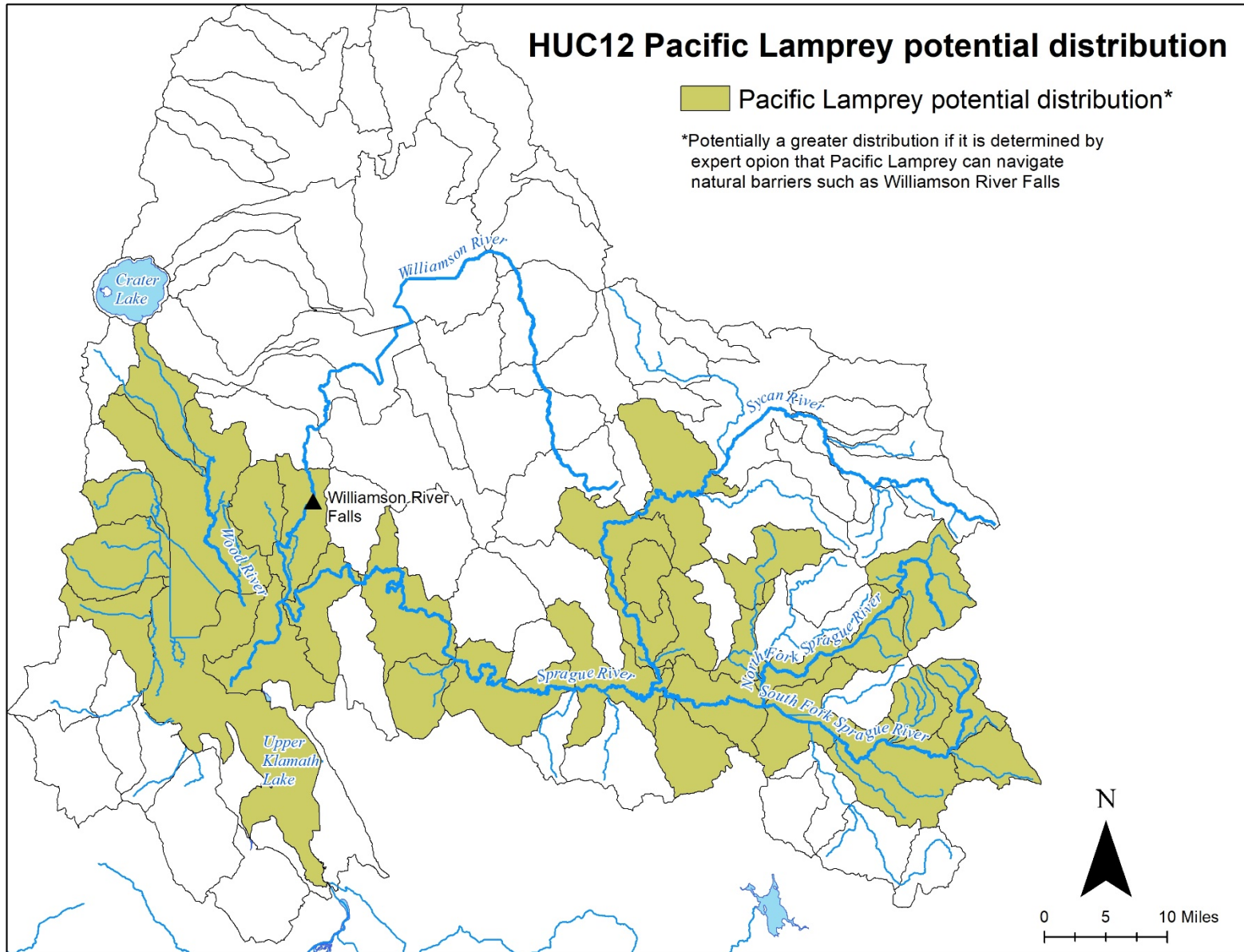
Chinook Salmon potential distribution



HUC12 Pacific Lamprey potential distribution

 Pacific Lamprey potential distribution*

*Potentially a greater distribution if it is determined by expert opinion that Pacific Lamprey can navigate natural barriers such as Williamson River Falls



HUC12	Name	Current and Historical Bull Trout	Historic Bull Trout	Redband Trout	Lost River and Shortnose Sucker	Steelhead Trout	Chinook Salmon	Pacific Lamprey	Comments
180102010101	Headwaters Williamson River			X					
180102010102	Haystack Draw-Williamson River			X					
180102010103	Deep Creek-Williamson River			X					
180102010104	Aspen Creek-Williamson River			X					
180102010105	Long Prairie-Williamson River			X					
180102010201	Deer Creek								
180102010202	Shoestring Creek								
180102010203	Lost Creek								
180102010204	Miller Creek								
180102010205	Sink Creek								
180102010206	Cottonwood Creek								
180102010207	Tiny Creek								
180102010208	Forked Horn Springs								
180102010301	Silent Creek								
180102010302	Cow Creek								
180102010303	Big Springs Creek								
180102010401	Upper Jack Creek								
180102010402	Dillon Creek								
180102010403	Lower Jack Creek								
180102010404	Mosquito Creek								
180102010405	Skellock Draw								
180102010406	Scott Creek								
180102010407	Wildhorse Ridge-Williamson River			X					
180102010501	Crater Lake								
180102010502	Sand Creek								
180102010503	Yoss Creek			X					

HUC12	Name	Current and Historical Bull Trout	Historic Bull Trout	Redband Trout	Lost River and Shortnose Sucker	Steelhead Trout	Chinook Salmon	Pacific Lamprey	Comments
180102010504	Klamath Marsh-Williamson River			X					
180102010505	Town of Fuego-Williamson River			X					
180102010601	Hog Creek								
180102010602	Egan Spring-Williamson River			X					
180102010603	Spring Creek			X		X	X	X	
180102010604	Larkin Creek-Williamson River			X		X	X	X	
180102010605	Lobert Draw-Williamson River			X	X	X	X	X	
180102020101	Paradise Creek			X					
180102020102	Long Creek			X					
180102020103	Headwaters Sycan River		X	X					
180102020201	Chocktoot Creek								
180102020202	Coyote Creek								
180102020203	Log Spring								
180102020204	Calahan Creek-Long Creek	X	X	X					Bull Trout currently only found in upper Long Creek
180102020205	Shake Creek								
180102020206	Dry Creek								
180102020207	Sycan Marsh-Sycan River		X	X					
180102020301	Upper Fishhole Creek			X		X			
180102020302	Middle Fishhole Creek			X		X			
180102020303	Pole Creek								
180102020304	Lower Fishhole Creek			X		X			
180102020401	Whitworth Creek		X	X		X		X	
180102020402	Upper South Fork Sprague River		X	X		X	X	X	
180102020403	Brownsworth Creek	X	X	X		X		X	Bull Trout currently only found in upper Brownsworth and Leonard Creeks; recent introduction of Brook Trout in Leonard Creek
180102020404	Middle South Fork Sprague River		X	X		X	X	X	
180102020405	Deming Creek	X	X	X					Bull Trout currently only found in upper Deming Creek

HUC12	Name	Current and Historical Bull Trout	Historic Bull Trout	Redband Trout	Lost River and Shortnose Sucker	Steelhead Trout	Chinook Salmon	Pacific Lamprey	Comments
180102020713	Kamkoan Spring-Sprague River			X	X	X	X	X	
180102020714	Whitehorse Spring								
180102020715	Crystal Castle Spring-Sprague River			X	X	X	X	X	
180102030101	Upper Annie Creek			X					
180102030102	Lower Annie Creek	X	X	X		X	X	X	Bull Trout only currently found in upper Sun Creek above NPS barrier
180102030103	Dry Creek								
180102030104	Sevenmile Creek		X	X		X	X	X	
180102030105	Crooked Creek-Wood River		X	X	X	X	X	X	
180102030201	Seldom Creek			X					
180102030202	Upper Fourmile Creek			X					
180102030203	Lower Fourmile Creek			X					
180102030301	Threemile Creek	X	X	X		X		X	
180102030302	Fourmile Creek			X	X	X	X	X	Bull Trout currently only found in upper Threemile Creek
180102030303	Rock Creek-Frontal Upper Klamath Lake			X		X		X	
180102030304	Moss Creek-Frontal Upper Klamath Lake			X		X			
180102030305	Aspen Lake			X		X			
180102030306	Long Lake Valley			X					
180102030307	Eagle Ridge-Frontal Upper Klamath Lake			X					
180102030308	King Cabin Canyon-Frontal Upper Klamath Lake			X	X				
180102030309	Upper Klamath Lake			X	X	X	X	X	